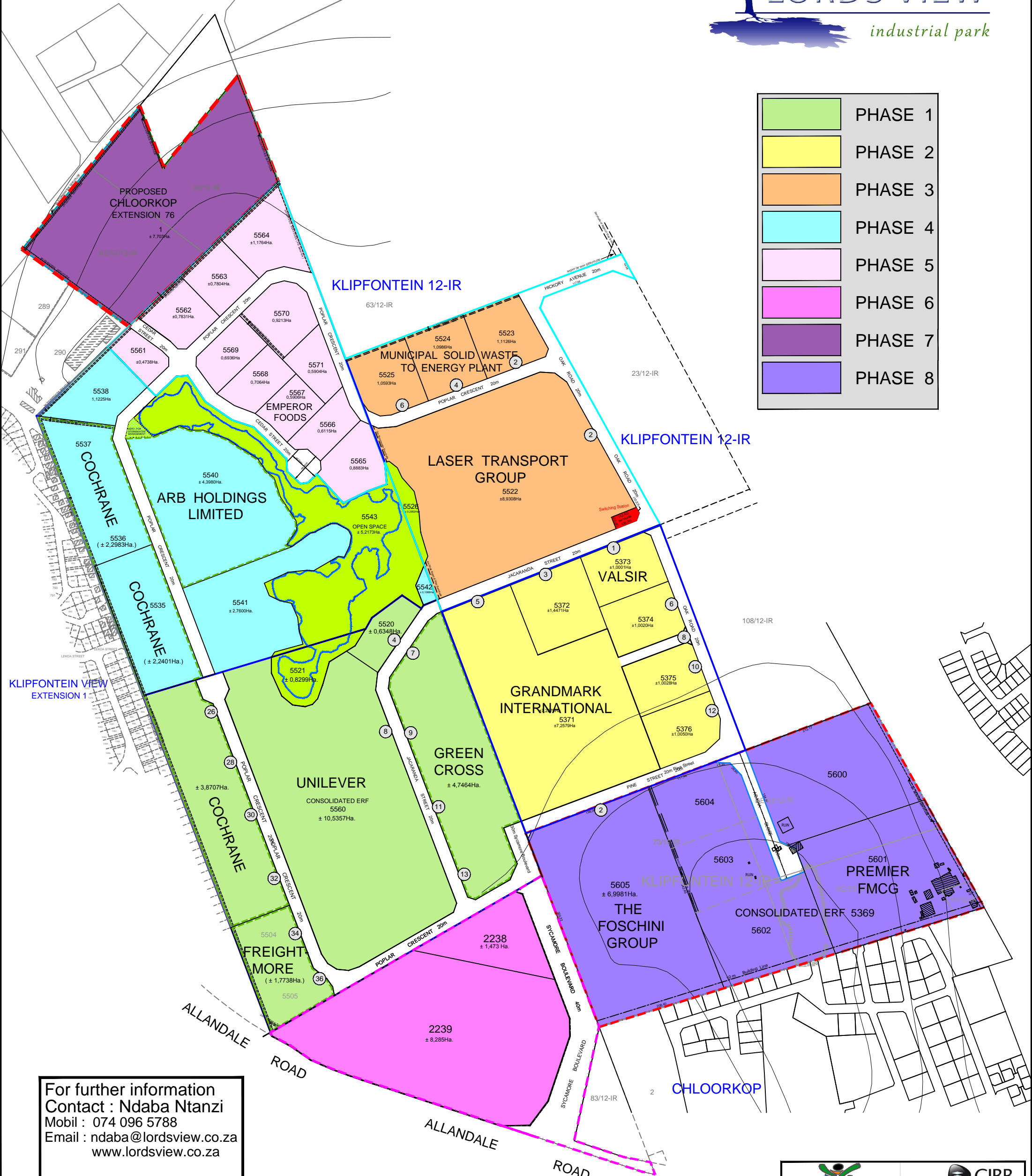




LORDS VIEW

industrial park

	PHASE 1
	PHASE 2
	PHASE 3
	PHASE 4
	PHASE 5
	PHASE 6
	PHASE 7
	PHASE 8



For further information
 Contact : Ndaba Ntanz
 Mobil : 074 096 5788
 Email : ndaba@lordsview.co.za
 www.lordsview.co.za



DATE : MAR. 2014	PLAN No. J33140/MP1/1 PLAN NO. CHL/Master Plan Revised 02.08.2017
SCALE : 1 : 2 000	